



Single Shoulder Slim Fit Formal Dress Ruffled Edge Cover Hip Fashion Sexy Slit Dress

Our Product Introduction

for more products please visit us on stylishladydress.com

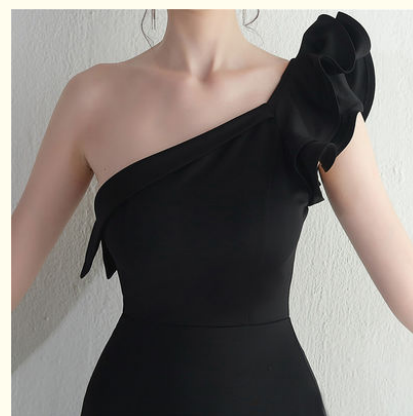
Basic Information

- Place of Origin: china
- Model Number: 9556
- Minimum Order Quantity: expand on
- Price: expand on

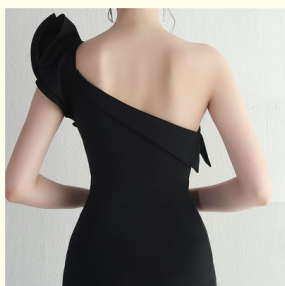


Product Specification

- Waistline: High Waist
- Fashion Element: One Shoulder
- Occasion: Evening
- Length: Maxi Dress
- Sleeve Length: Sleeveless
- Color: Customizable
- Gender: Female
- Neckline: Skew Collar
- Craft: Handmade Flower
- Highlight: **Single Shoulder Slim Fit Formal Dress ,
Slim Fit Formal Dress Ruffled Edge ,
Cover Hip Fashion Sexy Slit Dress**



More Images



Product Description

Slim evening dress with irregular ruffled edge and single shoulder drop to cover hip sexy fashion slit dress

Technical Parameters:

| | |
|---------------------|--|
| Name | Slim Evening Dress |
| Color | Customizable |
| Gender | Female |
| Size | S, M, L |
| Occasion | Evening |
| Sleeve Length | Sleeveless |
| Waistline | High Waist |
| Pattern Type | Solid |
| Fashion Element | Falbala, Sloping Shoulder, Slit |
| Necklineskew collar | |
| Keywords | New fashion dress for women, fashion and style for ladies, trending fashion for ladies |

Product Description:

Slim Evening Dress – Latest Dresses for Ladies Party Wear

Introducing the latest slim-fit evening dress for ladies party wear - perfect for any occasion. This long dress is made from the finest quality cotton and polyester fibers with handmade flowers, falbala, sloping shoulders and slit to give you maximum comfort and sense of style. Whether it's a night out or a formal party, this dress is sure to make you stand out from the crowd. This slim-fit evening gown is the perfect fall/winter look for ladies, the perfect combination of style and comfort.



Features:

Product Name: Slim Evening Dress
Waistline: High Waist
Size: S, M, L
Fashion Element: Falbala, Sloping Shoulder, Slit
Sleeve Length: Sleeveless
Stylish Outfits for Women
Latest Dresses for Ladies Party Wear
Women Trending Dress

Applications:

This Slim Evening Dress is perfect for all occasions, providing a fashionable and stylish look for women. It is made of high-quality material with great attention to detail, originating in China. It has a slim fit and comes in three sizes: small, medium, and large, making it the perfect fit for all ladies. Moreover, it has a pullover closure and is available in customizable colors to match any season, be it autumn or winter. This dress is a must-have and will surely make you look stunning.

Customization:

Slim Evening Dress Customization Service

Create a fashionable and classy look for your next big event with our custom-made slim evening dresses! Choose from knee-length designs with pullover closure and solid pattern. Our selection of sizes from S, M, and L will fit you perfectly. All our dresses are made in China to ensure quality.

Choose one of our stylish slim evening dresses for ladies to make a fashion statement at your next party. With the latest designs and fashion-forward trends, you are sure to look stunning. Quality materials and craftsmanship from China guarantee you an unforgettable night.

FAQ:

Q: What is the place of origin of this Slim Evening Dress?

A: The place of origin of this Slim Evening Dress is China.

Q: What is the size range of this Slim Evening Dress?

A: The size of this Slim Evening Dress ranges from M to XL.

Q: What material is the Slim Evening Dress made from?

A: The Slim Evening Dress is made from high quality polyester.

Q: Is the Slim Evening Dress suitable for special occasions?

A: Yes, the Slim Evening Dress is perfect for special occasions.

Q: Is the Slim Evening Dress machine washable?

A: Yes, the Slim Evening Dress is machine washable.

VINAS DRESS Guangzhou Vinas clothing technology Co., LTD



15827133024



leopeng15827133024@gmail.com



stylishladydress.com

Building F, No. 3 Nanpu Nangui Road, Luopu Street, Panyu District, Guangzhou City