



## Stylish Shiny Slim Evening Dress Sexy Shoulder Halter Slimming Formal Gowns

Our Product Introduction

for more products please visit us on [stylishladydress.com](http://stylishladydress.com)

### Basic Information

- Place of Origin: china
- Model Number: 9568
- Minimum Order Quantity: expand on
- Price: expand on

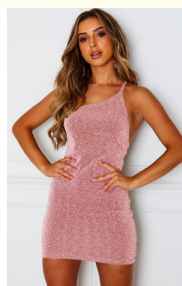


### Product Specification

- Neckline: Skew Collar
- Gender: Female
- Closure Type: Pullover
- Style: Slim
- Name: Slim Evening Dress
- Sleeve Length: Sleeveless
- Season: Autumn/Winter
- Embellishment: Sparkling
- Craft: Spaghetti Strap
- Fashion Element: Backless
- Highlight: Stylish Shiny Slim Evening Dress, Slim Evening Dress Sexy, Halter Slimming Formal Gowns



### More Images



## Product Description

**Stylish shiny sexy slim shoulder halter slim evening gown**

### Technical Parameters:

Name	Features
Slim Evening Dress	Waistline: High Waist; Style: Slim; Material: Cotton,polyester Fiber; Embellishment: Embroidery; Pattern Type: Solid; Sleeve Length: Long Sleeve,sleeveless; Size: S, M, L; Color: Customizable; Neckline: V-neck.

### Product Description:

This slim-fit evening dress is perfect for women's fashionable look. It features the unique Falbala, thin strap oblique shoulder and backless combination, making it stand out from other fashionable outfits for ladies. The closed type is a jumper with a high waist line and a knee-length hemline. This dress is a great choice for women's fashion style and is suitable for special occasions.



## Features:

Product Name: Slim Evening Dress  
Fashion Element: Falbala, Sloping Shoulder, Slit  
Season: Autumn/Winter  
Color: Customizable  
Occasion: Evening  
Ladies Trending Dress  
Stylish Traditional Dresses for Ladies  
Stylish Outfits for Women

## Applications:

Slim Evening Dress is a perfect fashion choice for women who attend special occasions and formal events. It is designed with a knee-length silhouette and comes with a pullover closure for a secure fit. This dress is made from high-quality materials and is available in a variety of customizable colors. The Slim Evening Dress is perfect for the autumn/winter season and is sure to make you look and feel your best. With its stylish design, this dress is sure to be a hit at any formal event or party. Whether you're attending a prom, cocktail party, or wedding, the Slim Evening Dress is the perfect choice for making a fashion statement.

This stylish dress is proudly made in China and is sure to become a staple in any woman's wardrobe. Whether you are looking for a timeless piece of clothing or something more modern and chic, the Slim Evening Dress is sure to be the perfect option. With its fashionable design and comfortable fit, this dress is sure to make you look and feel your best at any special occasion.

## Customization:

Tailored slim-fit evening dress for women

This slim-fitting women's evening gown is made in China and can be customized in color. It is knee-length and comes in two different sleeve lengths: long sleeve and sleeveless. Solid pattern, embroidered embellishment. It is the latest dress suitable for women to wear at parties.

## FAQ:

Q1: What is the place of origin of the Slim Evening Dress?

A1: The place of origin of the Slim Evening Dress is China.

Q2: What sizes are available for the Slim Evening Dress?

A2: The Slim Evening Dress is available in sizes S, M, and L.

Q3: How do I know if the Slim Evening Dress will fit me?

A3: Please refer to the size chart for the Slim Evening Dress to determine the best fit for you.

Q4: Does the Slim Evening Dress come in other colors?

A4: Yes, the Slim Evening Dress is available in other colors.

Q5: Is the Slim Evening Dress machine washable?

A5: No, the Slim Evening Dress should not be machine washed. Please refer to the care instructions for more information.

**VINAS DRESS** Guangzhou Vinas clothing technology Co., LTD



15827133024



leopeng15827133024@gmail.com



stylishladydress.com

Building F, No. 3 Nanpu Nangui Road, Luopu Street, Panyu District, Guangzhou City