



## Sexy Slimming Evening Gowns Ice Silk Solid Color V Neck Backless Formal Dresses Tight

Our Product Introduction

for more products please visit us on [stylishladydress.com](http://stylishladydress.com)

### Basic Information

- Place of Origin: china
- Model Number: 9629
- Minimum Order Quantity: expand on
- Price: expand on

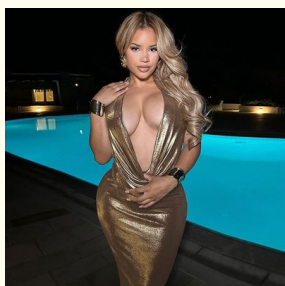


### Product Specification

- Closure Type: Pullover
- Material: Cotton,polyester Fiber
- Occasion: Evening
- Fashion Element: Sexy Tight Dress
- Name: Slim Evening Dress
- Style: Slim
- Pattern Type: Solid
- Sleeve Length: Sleeveless
- Function: Slim And Slim
- Highlight: **Sexy Slimming Evening Gowns, Slimming Evening Gowns Ice Silk, V Neck Backless Formal Dresses Tight**



### More Images



## Product Description

**Sexy Spice Ice silk solid color V-neck backless tight midlength dress evening gown**

### Technical Parameters:

Name	Slim Evening Dress
Gender	Female
Season	Autumn/Winter
Closure Type	Pullover
Embellishment	Embroidery
Neckline	V-neck
Color	Customizable
Sleeve Length	Sleeveless
Style	Slim
Length	maxi dress
Keywords	Womens Stylish Dresses, Fashion Clothes for Women, New Fashion Dress for Women, Classic Dress, Elegant Dress

### Product Description:

For ladies who want to look chic and stylish, our slim-fit evening wear is perfect. This stylish womenswear will put you at the forefront of fashion and style. With its slim-fitting silhouette and sexy V-neck, this outfit will make you look and feel glamorous. It is available in S, M and L sizes and is designed to reach knee length. Whether you're attending a formal event or just hanging out with friends, this slim-fit evening gown will make you look your best and become the latest fashion trend for ladies.



## Features:

Product Name: Slim Evening Dress  
Fashion Element: Falbala, Sloping Shoulder, Slit  
Closure Type: Pullover  
Color: Customizable  
Embellishment: Embroidery  
Waistline: High Waist  
Latest Dresses for Ladies Party Wear  
Women's Stylish Dresses  
Female Fashion Styles

## Applications:

Slim Evening Dress is the perfect choice for the modern woman who wants to look trendy and stylish. With its Place of Origin in China, it features exquisite Embroidery embellishment that adds a unique touch to the dress. With its Customizable colors, it can be tailored to fit your personal style. It is suitable for Autumn and Winter, with a range of sizes from S, M, L and sleeve lengths from Long Sleeve to Sleeveless. Slim Evening Dress is a perfect choice for women who want to look fashionable and stylish in the latest trends of ladies dress.

## Customization:

Stylish Traditional Dresses for Ladies: Slim Evening Dress

This slim evening dress is perfect for autumn/winter season. It features a knee-length design and is available in sizes S, M, L. You can also customize the color according to your needs. It is made from high-quality materials from China and perfect for stylish and trendy women's clothing.

## FAQ:

Q: What is the place of origin of this slim evening dress?

A: This slim evening dress is from China.

Q: What material is this slim evening dress made of?

A: This slim evening dress is made of silk.

Q: What size does this slim evening dress come in?

A: This slim evening dress is available in a range of sizes.

Q: Does this slim evening dress have a zipper?

A: Yes, this slim evening dress has a zipper.

Q: Is this slim evening dress machine washable?

A: No, this slim evening dress should be dry cleaned.

**VINAS DRESS** Guangzhou Vinas clothing technology Co., LTD



15827133024



leopeng15827133024@gmail.com



styishladydress.com

Building F, No. 3 Nanpu Nangui Road, Luopu Street, Panyu District, Guangzhou City