



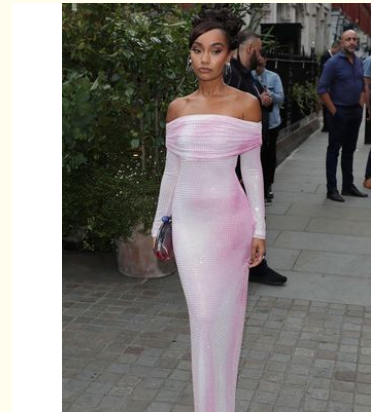
## Custom Sexy One Line Shoulder Slimming Evening Dress With Chest

Our Product Introduction

for more products please visit us on [stylishladydress.com](http://stylishladydress.com)

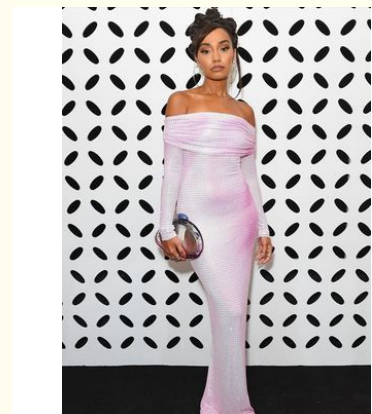
### Basic Information

- Place of Origin: china
- Model Number: w603
- Minimum Order Quantity: expand on
- Price: expand on



### Product Specification

- Embellishment: Embroidery
- Fashion Element: Falbala, sloping Shoulder, slit
- Closure Type: Pullover
- Sleeve Length: Long Sleeve, sleeveless
- Gender: Female
- Color: Customizable
- Customized Service: Customized Service
- Occasion: Evening
- Highlight: **One Line Shoulder Slimming Evening Dress, Slimming Evening Dress With Chest**



### More Images



## Product Description

Custom new fashion sexy one-line shoulder with chest slimming evening dress women

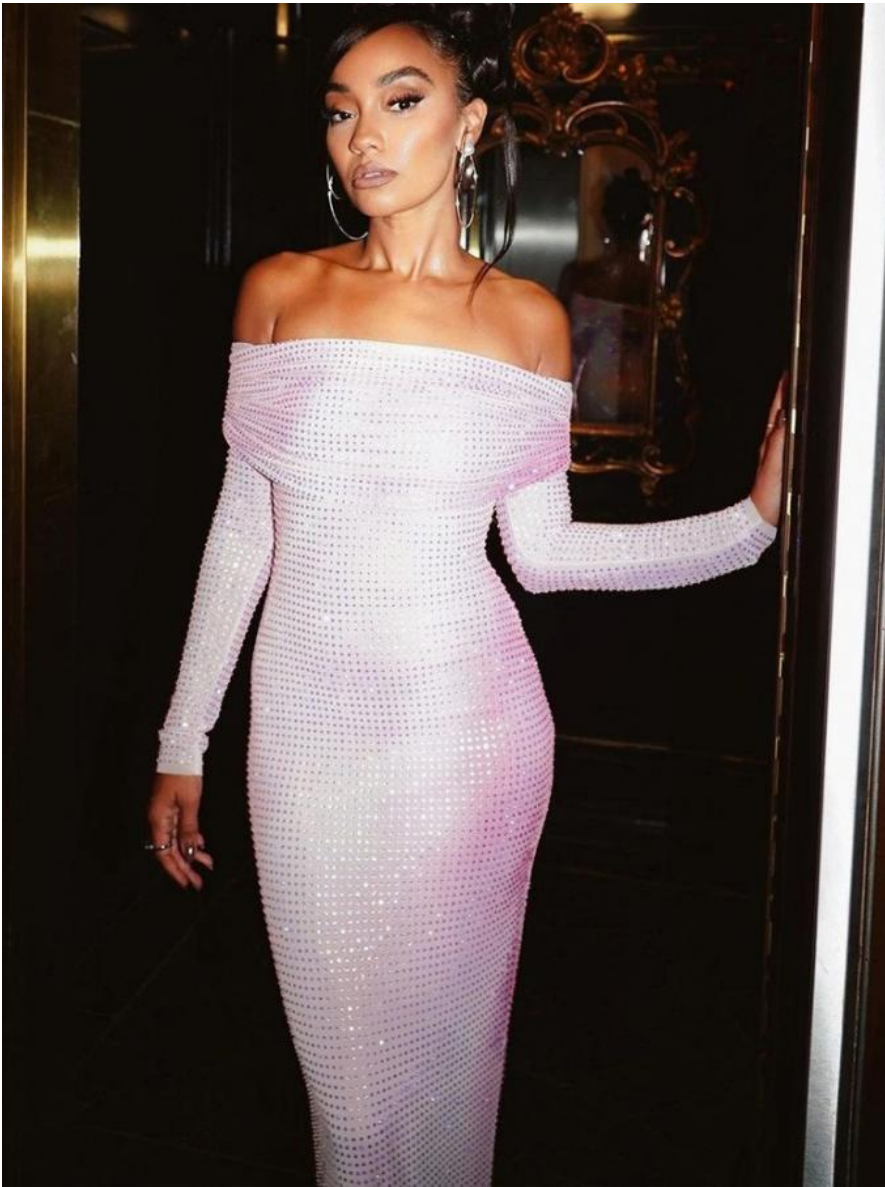
### Technical Parameters:

Neckline:	V-neck	
Length:	Knee-length	
Waistline:	High Waist	
Material:	Cotton, polyester Fiber	
Season:	Autumn/Winter	
Occasion:	Evening	
Color:	Customizable	
Embellishment:	Embroidery	
Closure Type:	Pullover	
Sleeve Length:	Long Sleeve, sleeveless	
Fashion dress:		Slim fit
Female fashion styles:		

### Product Description:

Product Overview: Slim Evening Dress

If you're looking for a fashion wear for ladies that is sleek, elegant and stylish, then the Slim Evening Dress is the perfect choice for you. This modern dress for women party wear is designed to make you stand out in any evening event. With its high waistline and slim fit, it will accentuate your curves and give you a feminine and sophisticated look.



#### Key Features:

**High Waistline:** The high waistline of this dress will help to elongate your legs and create a taller and slimmer appearance. It will also cinch your waist and give you an hourglass figure.

**Pattern Type: Solid:** The solid color of this dress makes it a versatile piece that can be dressed up or down for different occasions. It also adds a touch of elegance and simplicity to the overall look.

**Customized Service:** We understand that every woman has a unique body shape and size. That's why we offer customized service for this dress, allowing you to get the perfect fit and feel confident in your outfit.

**Size:** Available in S, M, L sizes, this dress caters to a wide range of body shapes and sizes, ensuring that every woman can find their perfect fit.

**Style:** This dress is designed with a slim and sleek silhouette, giving you a modern and sophisticated look. It is perfect for formal events, parties, and any special occasions.

With the latest trends in fashion for ladies, the Slim Evening Dress is a must-have in every woman's wardrobe. It is a timeless piece that will never go out of style and will make you look and feel your best on any occasion. Don't miss out on this fashion essential and add it to your collection now!

#### Features:

**Product Name:** Slim Evening Dress

**Length:** Knee-length

**Waistline:** High Waist

**Occasion:** Evening

**Fashion Element:** Falbala, Sloping Shoulder, Slit

**Material:** Cotton, Polyester Fiber

#### Key Features:

Female fashion styles

Fashion dress

New fashion dress for women

High quality

Elegant

Slim

Applications:

Slim Evening Dress  
Place of Origin: China  
Embellishment: Embroidery  
Occasion: Evening  
Pattern Type: Solid  
Season: Autumn/Winter  
Sleeve Length: Long Sleeve, Sleeveless

Slim Evening Dress is a stylish and trendy women's clothing that is perfect for any special occasion. Made with exquisite embroidery and designed to enhance the beauty of women, this dress is a must-have for any fashion-forward woman.

Product Attributes:

Place of Origin:  
China  
Embellishment:  
Embroidery  
Occasion:  
Evening  
Pattern Type:  
Solid  
Season:  
Autumn/Winter  
Sleeve Length:  
Long Sleeve, Sleeveless  
Product Scene:

Perfect for parties and special events, our Slim Evening Dress will make you stand out in the crowd.  
Be the center of attention at any dinner with our stylish and elegant Slim Evening Dress.  
For a wedding, our Slim Evening Dress is the perfect choice for a sophisticated and fashionable look.  
Make a statement at a red carpet event with our stunning Slim Evening Dress.

Customization:

Slim Evening Dress Customization Service

Product Description:

Our Slim Evening Dress is a stylish traditional dress for ladies, perfect for any special evening occasion in the Autumn/Winter season. Made with high-quality materials and exquisite craftsmanship, it is the epitome of trendy women's clothing.

Customization Options:

**Place of Origin:** China  
**Gender:** Female  
**Season:** Autumn/Winter  
**Pattern Type:** Solid  
**Occasion:** Evening  
**Size:** S, M, L

Why Choose Our Customized Evening Dresses?

Our custom evening dresses are the perfect choice for those who want to stand out in a crowd. With our customization service, you can create a modern dress for women party wear that is uniquely tailored to your specific measurements and style preferences. This ensures a perfect fit and a dress that reflects your personal taste and individuality. Our team of experienced designers will work closely with you to bring your vision to life. From choosing the fabric and color to adding special details and embellishments, we will guide you through each step of the customization process. Our goal is to create a dress that not only fits you perfectly but also makes you feel confident and beautiful.

How to Order:

To order your customized Slim Evening Dress, simply fill out our online order form with your desired specifications and measurements. Our team will then contact you to discuss the details and provide you with a quote. Once the design and price are finalized, we will begin the production process and deliver your one-of-a-kind dress within the agreed upon timeframe. Make a statement at your next evening event with a customized Slim Evening Dress. Contact us today to get started.

FAQ:

**Q: What is the material of the Slim Evening Dress?**  
A: The Slim Evening Dress is made of high-quality fabric, which is soft and comfortable to wear.  
**Q: Where is the Slim Evening Dress made?**  
A: The Slim Evening Dress is made in China.  
**Q: What is the recommended washing method for the Slim Evening Dress?**

A: It is recommended to hand wash the Slim Evening Dress with cold water and gentle detergent to maintain its shape and color.

**Q: Is the Slim Evening Dress suitable for formal occasions?**

A: Yes, the Slim Evening Dress is designed for formal occasions such as weddings, parties, and red carpet events.

**Q: What is the length of the Slim Evening Dress?**

A: The length of the Slim Evening Dress varies depending on the size, but it generally falls at or below the knee for a sophisticated look.

**VINAS DRESS** Guangzhou Vinas clothing technology Co., LTD



15827133024



leopeng15827133024@gmail.com



stylishladydress.com

Building F, No. 3 Nanpu Nangui Road, Luopu Street, Panyu District, Guangzhou City